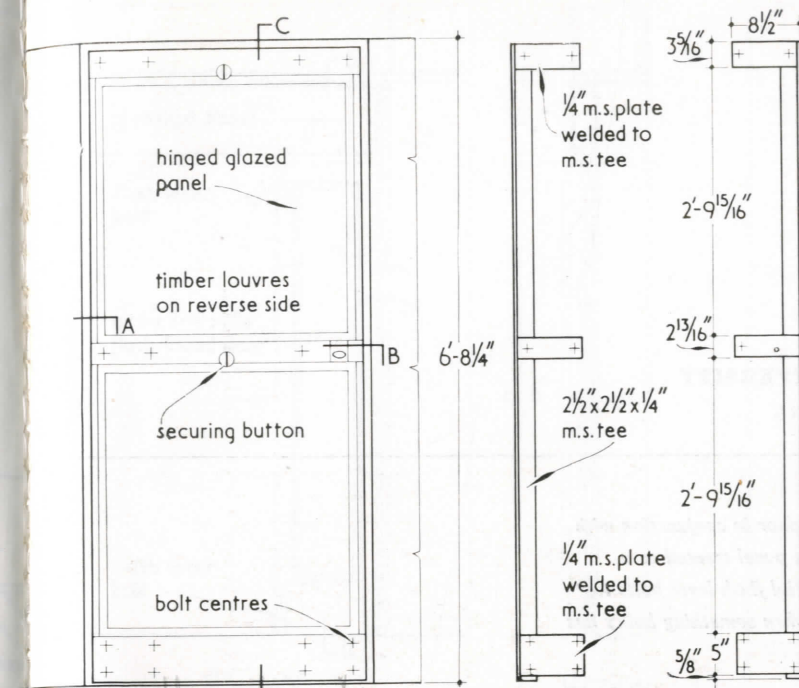


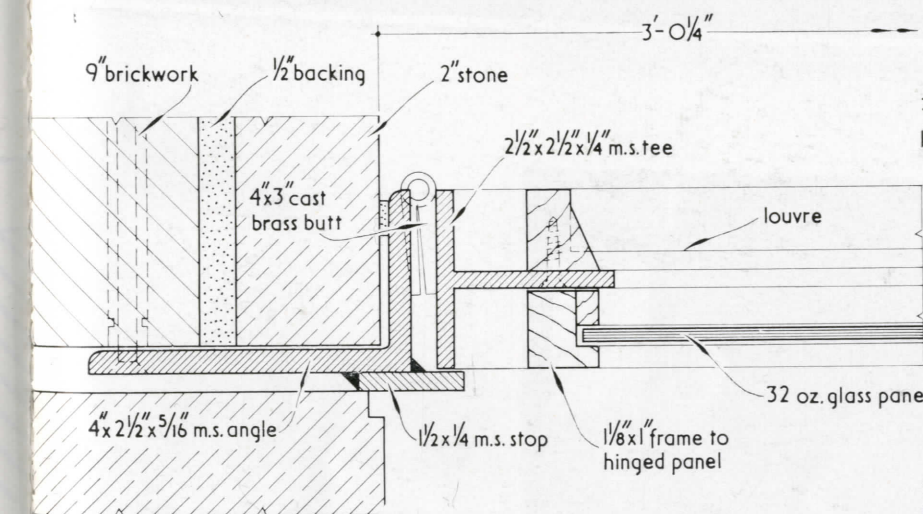
**VENTILATED DOOR: COLLEGE AT OXFORD**  
DESIGNED BY POWELL AND MOYA

The outer one of two doors to an undergraduate's room. It was required to let light into the lobby, while stopping anyone from seeing through, and also to give ventilation. This was done by fixing two glazed hoppers to the inner side and wood louvres to the outside. Stiles and frames have a mild steel core to reduce the visual framing to a minimum.

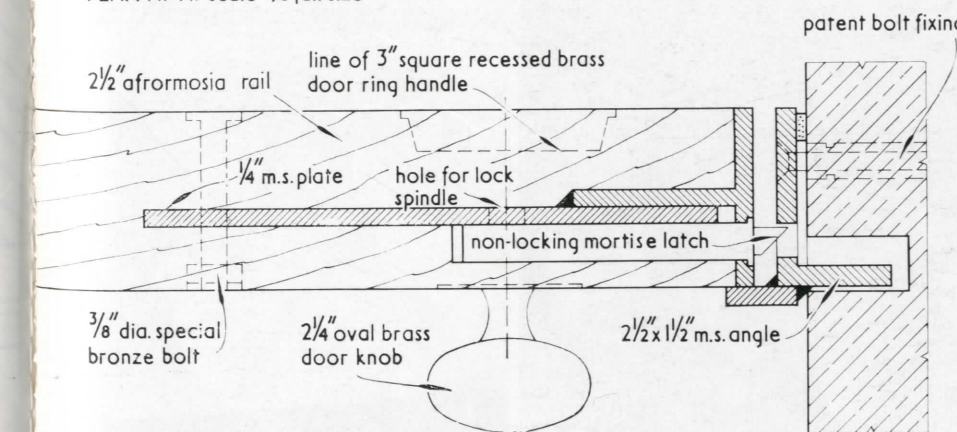


INTERNAL ELEVATION.  
scale 1/2" = 1'-0"

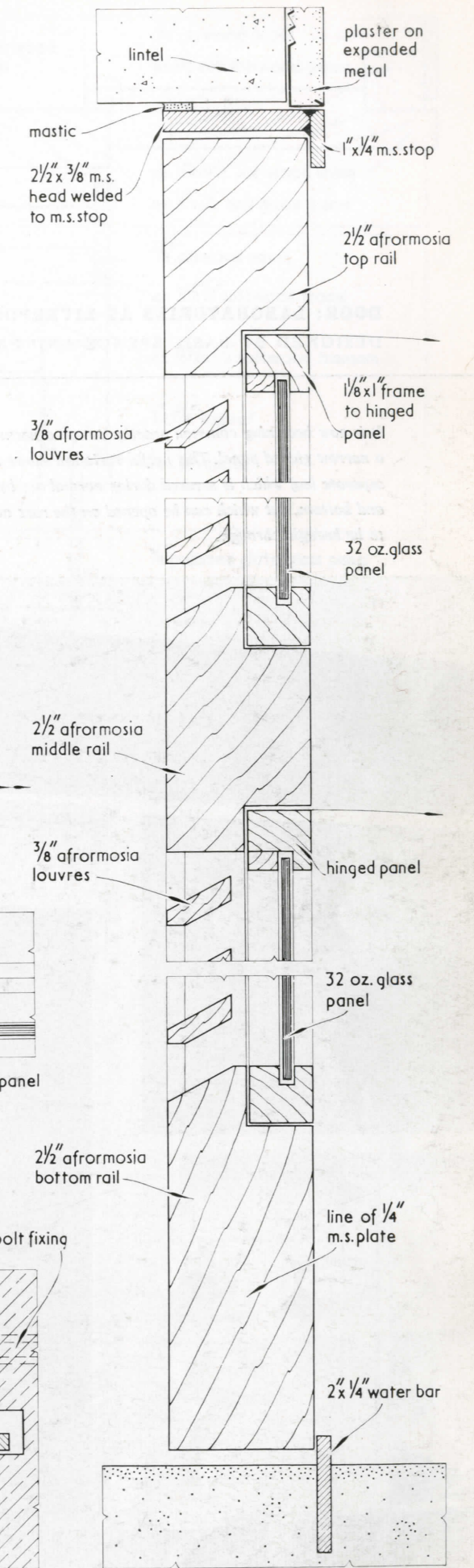
ELEVATION OF M.S. FRAMING.  
scale 1/2" = 1'-0"



PLAN AT A. scale 3/8 full size



PLAN AT B. scale 3/8 full size



SECTION C-C. scale 3/8 full size